



# KERN FAN GROUNDWATER STORAGE PROJECT

January 7, 2021

# PARTNERSHIP OF ROSEDALE AND IRWD



Rosedale-Rio Bravo Water Storage District (Rosedale)

Established in 1959

Provides water replenishment to over 27,500 acres of irrigated agricultural lands. A CVP water user.



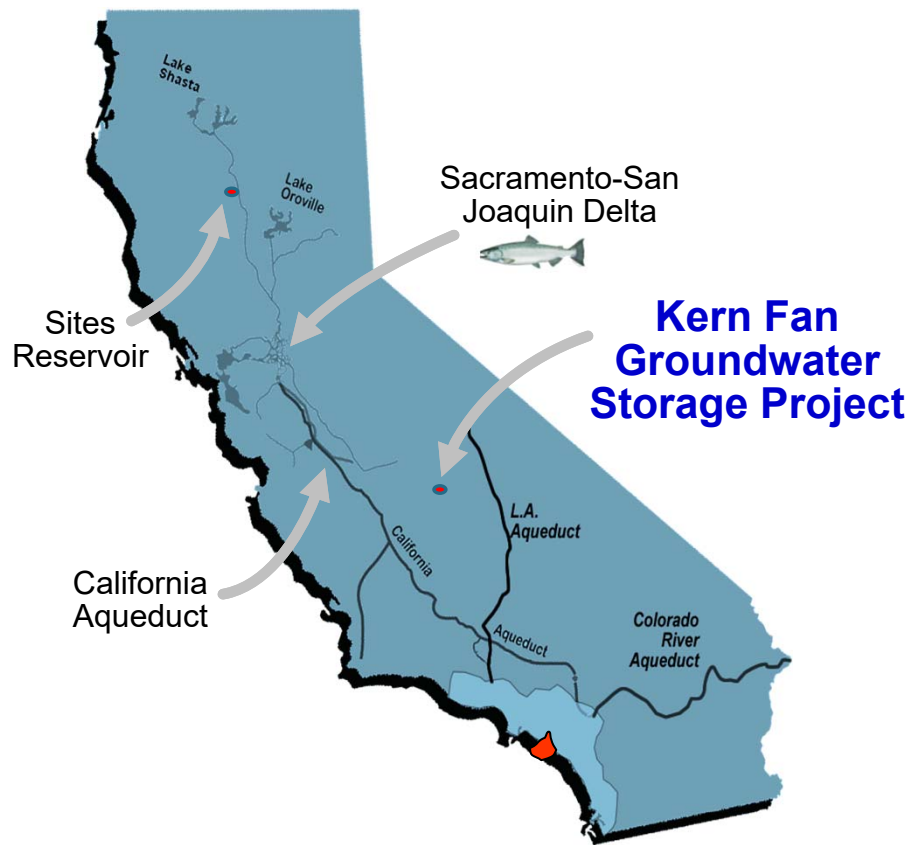
Irvine Ranch Water District (IRWD)

Established in 1961

Provides retail water, sewage and recycled water service to over 181 square miles in Orange County



Rosedale & IRWD have a long, successful history of jointly developing groundwater storage projects in Kern County – **Formed Joint Powers Authority in 2020**



## The Kern Fan Groundwater Storage Project:

- A new 100,000-acre-foot groundwater storage facility
- Stores “new” water otherwise lost to ocean
- Improves operational flexibility and resiliency
- Reduces pressure on the Delta ecosystem
- Provide water supply, fish and wildlife benefits
- Strategically located near federal, state, and local water conveyance facilities

**Implemented by Groundwater Banking Joint Powers Authority**

# PROJECT OVERVIEW



# PROJECT FACILITIES AND CAPACITIES

## New Conveyance from California Aqueduct

- New turnout
- New 10-mile canal with 500 cfs capacity
- 3 lift stations

## 1,050 Acres of Recharge Basins

- Wet year recharge capacity of 100,000 AF
- 100,000 AF storage capacity

## 12 Recovery Wells

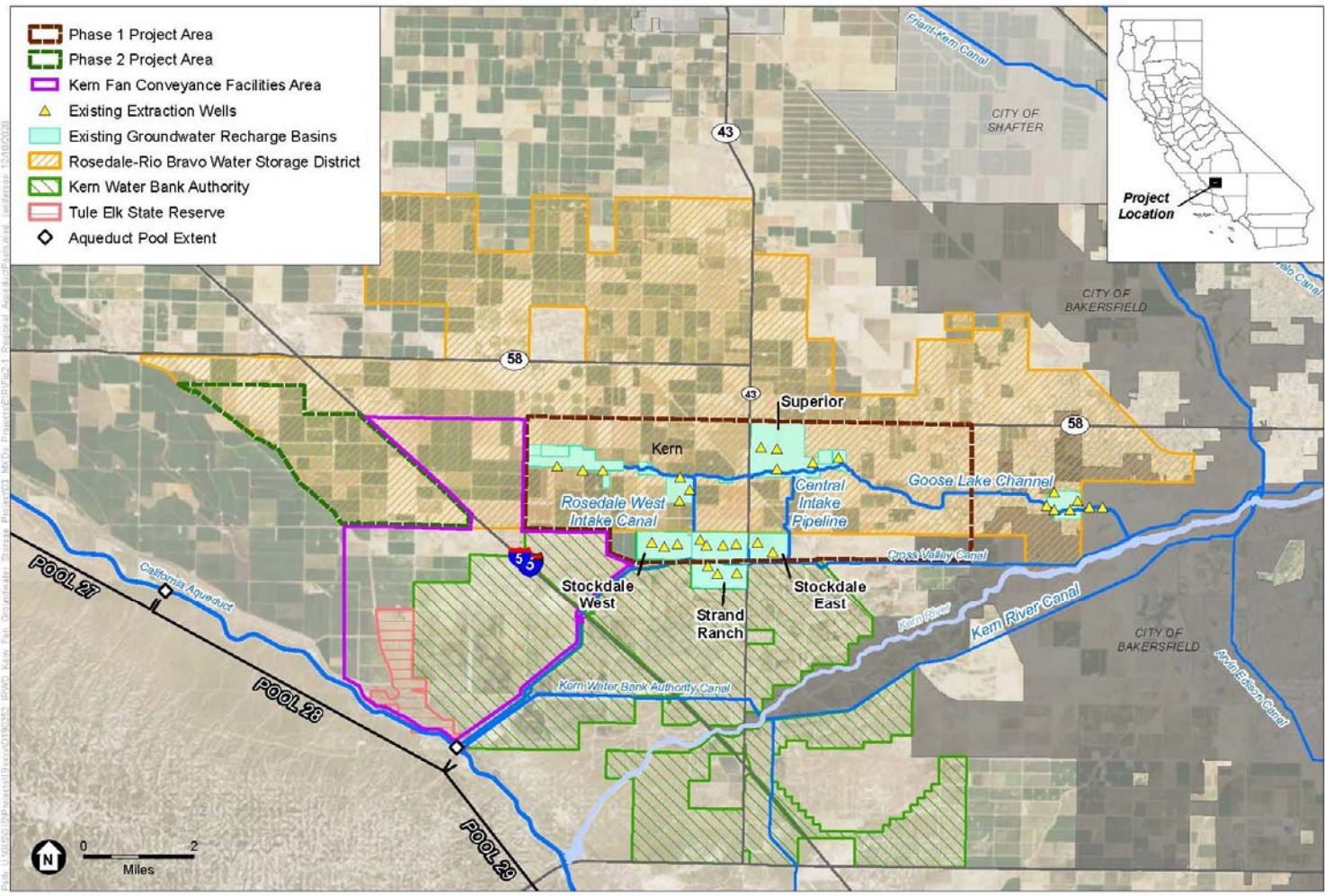
- Combined capacity up to 70 cfs

Stores “new” water otherwise lost to the ocean

- Article 21 water and other supplies

Improves flexibility in operation of State’s water systems

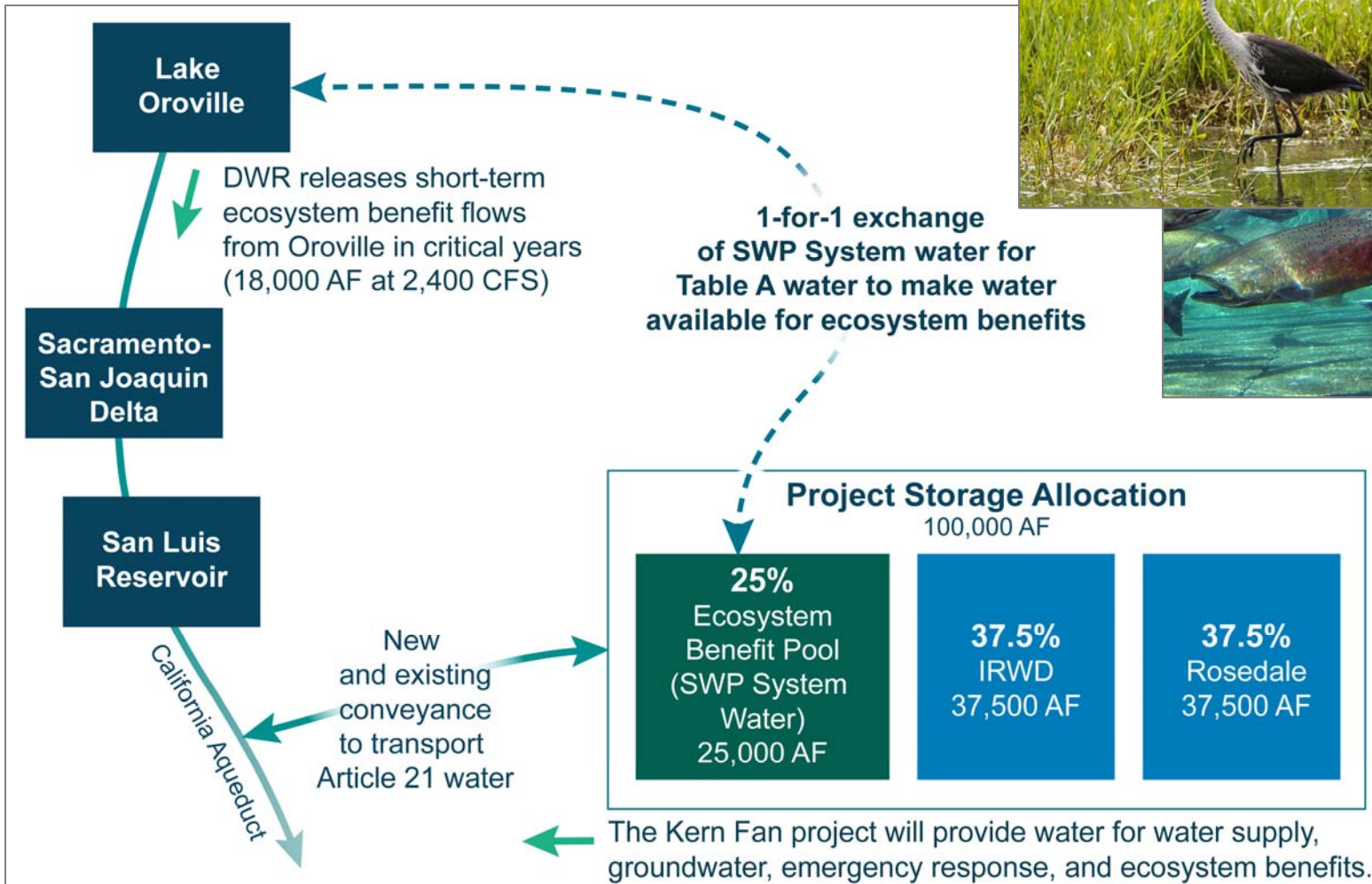
- No negative impacts to the SWP or CVP



# PROJECT LOCATION MAP

# PROJECT OPERATIONS

**Water Releases Coordinated to Benefit Species**  
 (e.g. chinook salmon & green sturgeon)



# PROJECT COSTS & BENEFITS

Estimated Project Cost:  
\$246 M



## NPV of \$ 410 M in Benefits



**M&I AND  
AGRICULTURE  
WATER SUPPLY**



**SUPPLEMENTAL  
WATER SUPPLY FOR  
CRITICAL DROUGHTS  
AND DELTA LEVEE  
FAILURES**



**HABITAT FOR DELTA  
FISH SPECIES**



**INTERMITTENT  
WETLAND HABITAT**



**IMPROVED  
GROUNDWATER  
LEVELS**



**PERMANENT CROP  
PRESERVATION &  
ECONOMIC BENEFITS**

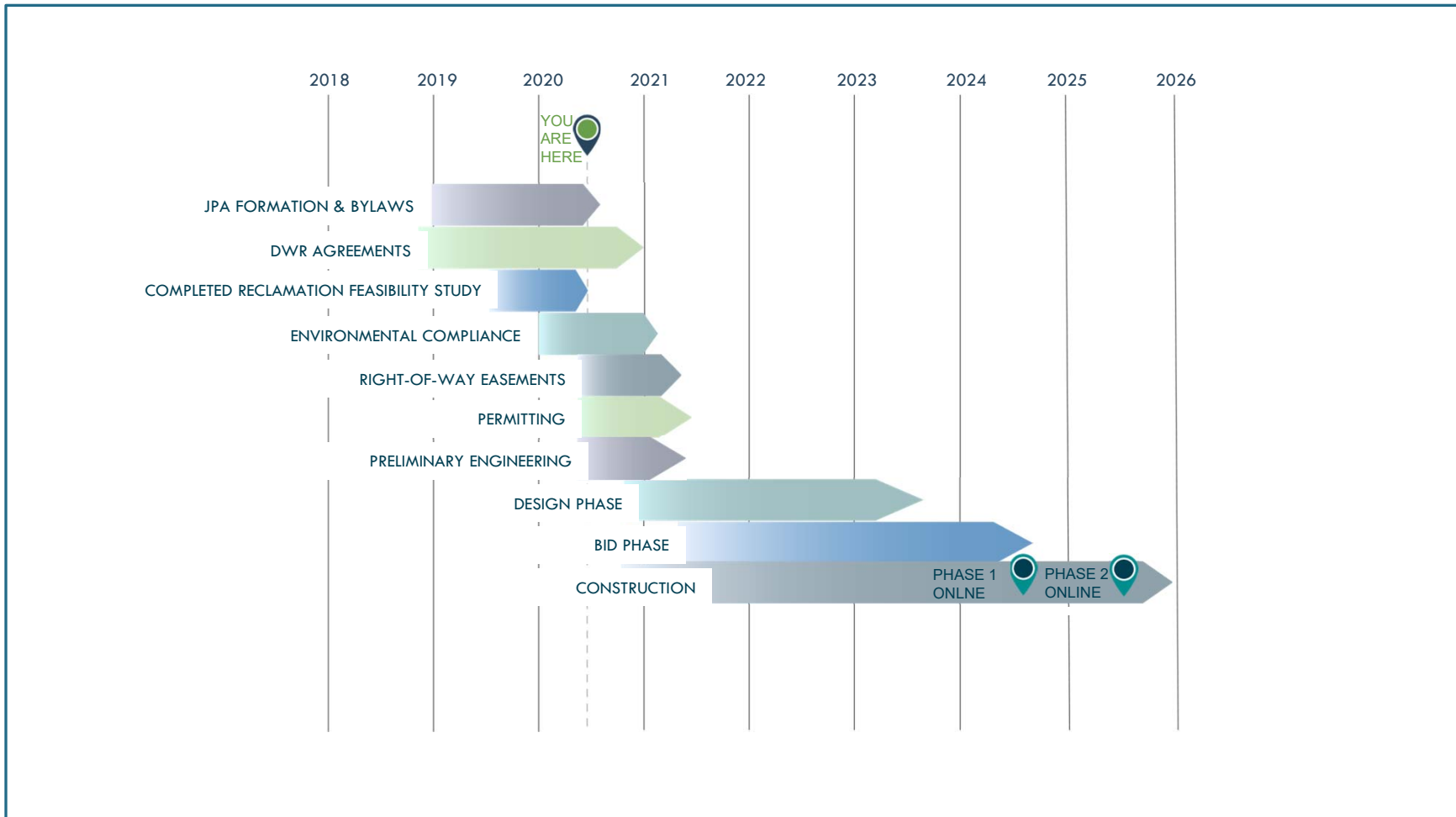
# PROJECT STATUS

- ❑ Awarded \$67.5 million in California Prop. 1 Water Storage Funding
- ❑ 30% Design / Feasibility Report in progress
- ❑ Working with DWR and KCWA on:
  - Hydraulic modeling of California Aqueduct
  - Ecosystem exchange concepts
  - Aqueduct subsidence and availability of Article 21 water
- ❑ Land search ongoing
- ❑ Environmental compliance
  - EIR Certified in December 2020
  - NEPA Compliance in early 2021
  - DWR taking lead on environmental compliance for ecosystem pulse and SWP related operations





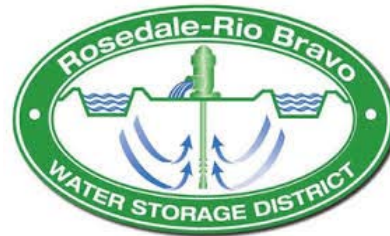
# PROJECT SCHEDULE



---

# CONTACT INFORMATION

---



**Eric Averett**  
General Manager  
Office: (661) 589-6045  
[eaverett@rrbwsd.com](mailto:eaverett@rrbwsd.com)

**Dan Bartel**  
Engineer, Rosedale  
Phone: (661) 589-6045  
[dbartel@rrbwsd.com](mailto:dbartel@rrbwsd.com)



**Paul Weghorst**  
Executive Director of Water Policy  
Office (949) 453-5632  
[weghorst@irwd.com](mailto:weghorst@irwd.com)

**Fiona Sanchez**  
Director of Water Resources  
Office (949) 453-5325  
[sanchezf@irwd.com](mailto:sanchezf@irwd.com)