

In This Issue:

Summer
Family Barbecue
San Joaquin
Wildlife Sanctuary
Ask Juan
Summer
Water Schedules

pipelines

JULY 2016 | NUMBER 7



Save the Date

Summer Family Barbecue

Hosted by Sea & Sage
Audubon Society

Saturday, July 30
5 p.m. – 10 p.m.

IRWD San Joaquin Marsh
5 Riparian View (intersection
of Michelson Drive and
Harvard Avenue), Irvine



Enjoy a sunset dinner in the meadow with a presentation by featured speaker Martin Fletcher of Friends of California Condors Wild and Free. There will also be evening bird walks and a nature book sale.

For more information, visit seaandsageaudubon.org (click "Summer BBQ" under "Special Events").

Water-Efficient Landscaping and Your Water Budget

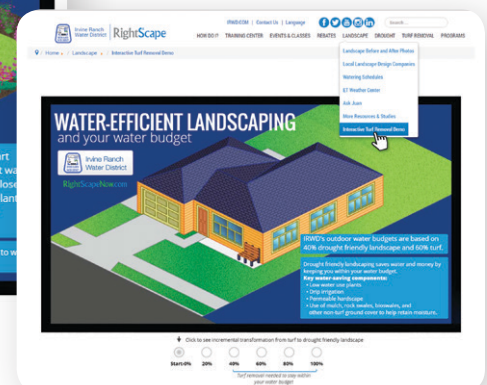
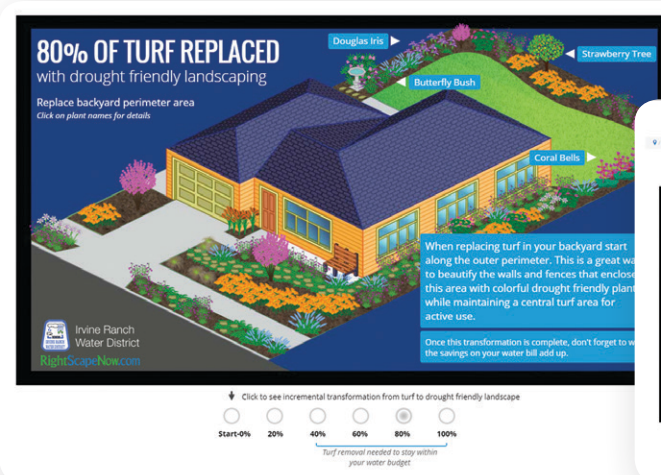
A new, contemporary landscape and water budget interactive demo is now available on RightScapeNow.com/demo. The demo's colorful motion graphics help residential customers visualize how much turf they need to replace at their home in order to remain within their water budgets. Users can click through several landscape designs with progressively more drought friendly features until they reach the final design that is 100% drought friendly.

The demo offers helpful tips for converting from turf to a water-efficient landscape and provides specific information on each of the drought friendly plants, trees and other water-efficient landscape features that are highlighted throughout the demo.

To use this new feature on the RightScape website, visit RightScapeNow.com/demo.

At a Glance...

- Interactive Turf Removal Demo
- Outdoor water budgets are based on 40% drought friendly landscape and 60% turf
- See how removing your grass can help you stay within your water budget



Fiscal Year 2016–2017 Rates

New water and sewer rates for Fiscal Year 2016–17 went into effect on July 1. For more information, visit irwd.com/services/rates-charges.

San Joaquin Wildlife Sanctuary: Not Just Another Pretty Place

Irvine Ranch Water District's San Joaquin Wildlife Sanctuary, or Marsh, is more than just a great place to bird watch or take scenic hikes on 12 miles of trails while enjoying the peace of nature. The Marsh also helps improve the water quality in the Newport Back Bay.

Urban runoff, caused by any water that flows into storm drains during dry weather makes its way into the Back Bay, impacting water quality. Inefficient watering of landscape, washing vehicles and hosing down of sidewalks are common causes of runoff. Urban runoff carries with it fertilizers, oils, trash, pet waste, and other contaminants, contributing to ocean pollution.

The Marsh receives water from nearby San Diego Creek, cycling it through a system of manmade ponds where it flows for 7 to 10 days. This gives the plants and soils in the ponds time to

naturally remove nitrates and other pollutants. The cleaner water is delivered back into the creek to continue its journey through the Newport Back Bay to the ocean.



IRWD has built upon the success of the San Joaquin Marsh by developing a watershed-wide system of wetlands called Natural Treatment Systems (NTS). Of 45 potential NTS sites, 25 have been built, with more on the way. NTS sites are anywhere from a quarter-acre to four acres in size and can be viewed from adjacent public areas, such as parks, bike trails and greenbelts. See irwd.com/services/natural-treatment-system for more information.



Q: My landscape is a mix of grass and flower bed areas with drought friendly plants. I currently use only spray head irrigation, but I am interested in saving water by converting to drip. How do I begin?

A: Start by putting drought-friendly plants with similar watering needs into the same area. This is called hydrozoning. You want to make sure that all your plants receive an adequate amount of water without overwatering any of them.

There is no need to remove your existing spray heads or dig up irrigation lines to convert to drip. Various drip conversion kits are available online that can utilize your existing system simply by replacing the heads with a conversion drip body. Cap off any spray heads you don't need and convert the rest without cutting or gluing.

Remember to never mix spray heads and drip irrigation on the same valve. Each type requires very different run-times and water line pressure. Spray heads put out water in gpm (gallons per minute) while drip puts out water in gph (gallons per hour).

To compare suggested drip vs. spray head watering schedules go to rightscapenow.com and look in "Landscape" You can also find the spray head to drip rebate at ocwatersmart.com.

JULY / AUGUST OUTDOOR WATERING SCHEDULE

STANDARD SPRAY HEAD IRRIGATION SCHEDULE	July	Turfgrass	Drought Tolerant Trees, Shrubs and Groundcover
	August	4 days, 3 cycles of 3 minutes	4 days, 3 cycles of 3 minutes
DRIP IRRIGATION SCHEDULES NETAFIM Techline CV Drip Systems	July	Emitter Spacing 18" / Row Spacing 18"	Emitter Spacing 12" / Row Spacing 18"
	August	3 days, 1 cycle of 55 minutes	3 days, 1 cycle of 25 minutes
RAINBIRD XFD Drip Systems	July	3 days, 1 cycle of 56 minutes	3 days, 1 cycle of 26 minutes
	August	3 days, 1 cycle of 38 minutes	3 days, 1 cycle of 17 minutes
		3 days, 1 cycle of 39 minutes	3 days, 1 cycle of 17 minutes

 **Like Us**
Irvine Ranch Water District

 **Follow Us**
@IRWDNews

 **Watch Us**
youtube.com/IrvineRanchWD

 **Follow Us**
@irwdnews

24-Hour Customer Service: 949-453-5300
Email: customerservice@irwd.com
Address: 15600 Sand Canyon Avenue, Irvine, CA 92618
Website: irwd.com

Board of Directors:
Mary Aileen Matheis – President, Douglas J. Reinhart – Vice President,
Steven E. LaMar, Peer A. Swan, John B. Withers
General Manager: Paul Cook, PE