

A new tool to log leaks!

Spot a leak in your community?
Let us know at
IRWD.com/logaleak.

pipelines

AUGUST 2023



Irvine Ranch
Water District

IRWD lauded for dam safety

The Association of State Dam Safety Officials has honored Irvine Ranch Water District with its 2023 Dam Safety Award for the western region. ASDSO's Dam Safety Award is given to organizations that make exemplary contributions to the improvement of dam safety in the United States.

Putting safety at the forefront of its mission, culture and purpose, IRWD is always seeking out new technologies and approaches to measure, monitor and ensure the safety of its dams. That includes these recent improvements:

- A Risk Informed Decision-Making method of evaluation, known as RIDM, that identifies risks and prioritizes efforts to minimize them.
- Satellite monitoring that provides millimeter-scale precision in examining and tracking thousands of dam points for consistent, frequent and reliable monitoring.
- An Automatic Data Acquisition System to digitally read, store and transmit measurements for monitoring in real time.



For more than 60 years, IRWD has safely owned, operated and maintained reservoirs and dams that store water for the benefit of the community. (Picture: San Joaquin Reservoir)

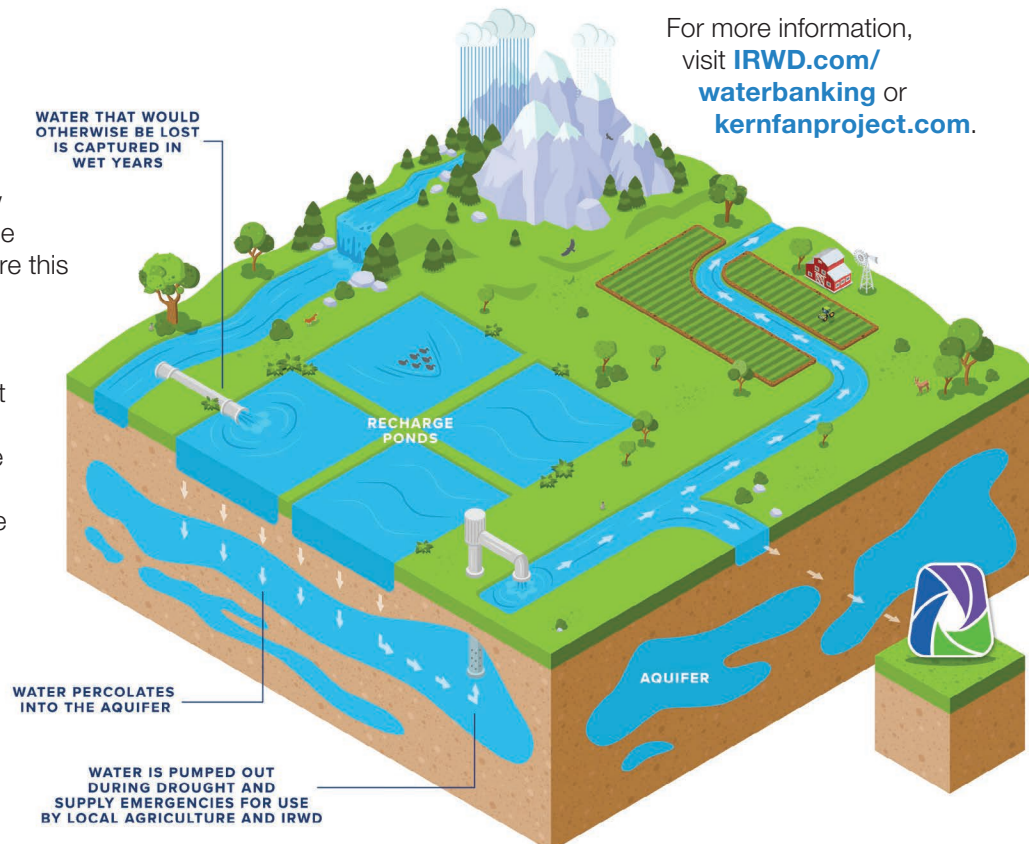
For more information on our Dam Safety Program, visit IRWD.com/dam-safety.

Winter snow is water in the bank

California's record-breaking snowpack, now melting slowly, has significantly increased the amount of water IRWD has been able to store this year in its groundwater storage facilities.

Since December 2022, nearly 30,000 acre-feet of water has been stored in District water banks, with more on the way. At 9.8 billion gallons, that's more than half of all the drinking water IRWD delivers to customers in one year. This is water that IRWD will have access to during a drought or other water shortage, and why water banking is an important water management tool.

Storing water and saving it—like money in the bank—is an investment for the future, making sure it is available to our customers when we need it.





Save the date

Take part in our new Plant Like a Local workshop series to get your yard in tip-top shape for planting in fall.

Prep for Fall Planting Wednesday, Sept. 13 6 – 7:30 p.m.

Find out what you need to do to get your landscape in top shape for planting.

Sign-up required:
IRWD.com/events

Landscaping to Protect Our Ocean Wednesday, Oct. 18 6 – 7:30 p.m.

Get watershed landscaping tips to prevent urban runoff from harming aquatic ecosystems.

Sign-up required:
IRWD.com/events

Time to Plant Wednesday, Nov. 15 6 – 7:30 p.m.

Get tips on native plants that will reflect and nurture your respect for sustainability.

Sign-up required:
IRWD.com/events

Top rebates for fall!

Now is a great time to take advantage of our outdoor rebates and programs:

- Get up to \$255 in rebates for a smart controller that automatically adjusts watering times based on weather, and the types of sprinklers and plants you have in your yard.
- Receive generous rebates for efficient spray nozzles, including rotary heads, and get up to 80 cents per square foot of area converted to drip irrigation. IRWD.com/rebates
- IRWD's Sprinkler Repair Program will also pay up to half the cost of repairs to your irrigation system! IRWD.com/sprinklerrepair



Q: Juan! It's been a hot summer. How can I protect my landscape from the heat and stay water efficient?

A: Good question! For starters, make sure to water your landscape just before sunrise, and don't forget to

mulch. Apply at least 3 inches around all your plantings to protect your soil from direct sunlight, help keep it cool, reduce evaporation and keep moisture deep within the root zone. Also, remove weeds as they compete for water. If you have a lawn, reduce your mowing frequency and keep blades at least 3 to 4 inches long.

Got landscape questions? Email AskJuan@IRWD.com or ask on Facebook, Twitter or Instagram with [#irwdcommunity](https://www.instagram.com/irwdcommunity). See past answers at IRWD.com/askjuan.

California native corner Juan's August plant: red buckwheat

Red buckwheat (*Eriogonum grande* var. *rubescens*) is a low-growing flowering perennial from our very own Channel Islands. It prefers full sun near the coast but part shade in inland areas. Blooming from spring through fall, it is a butterfly magnet, providing lots of summer color. Plant it en masse as a ground cover or on slopes. — Juan



Q: What is a pumping surcharge?

A: A pumping surcharge is applied to accounts for customers in locations that require additional pumping costs to deliver water to their homes. This surcharge is based on actual prevailing energy costs, and varies depending on what it costs to pump water to the area served.

In 2023, IRWD completed a pumping surcharge cost-of-service study, resulting in changes to pumping surcharge areas and costs for some customers. Those changes took effect in July.

If you live in an area affected by a pumping surcharge, it will be itemized on your monthly water bill.

Got a question? Email info@IRWD.com with "Ask Customer Service" as the subject line.

Like Us
Irvine Ranch Water District

Follow Us
@IRWDnews

Watch Us
youtube.com/IrvineRanchWD

Follow Us
@IRWDnews